



# Al Shawwaf

Steel

” Our innovative services and solutions extend across all the main sectors in the Kingdoms’ markets, covering all diverse and vital sectors in the Kingdom.”

We are always ahead.  
**Professional**  
Solutions for Your  
Business.





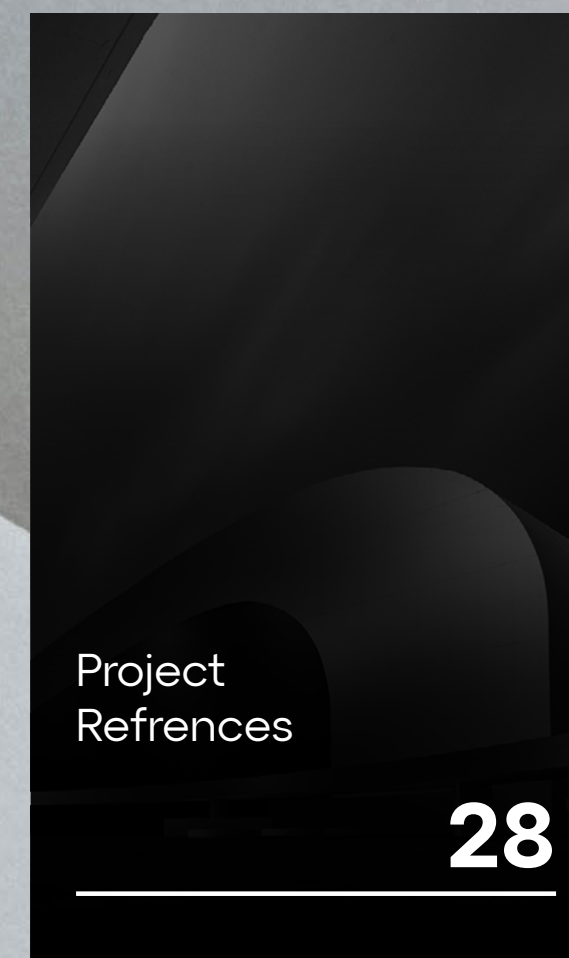
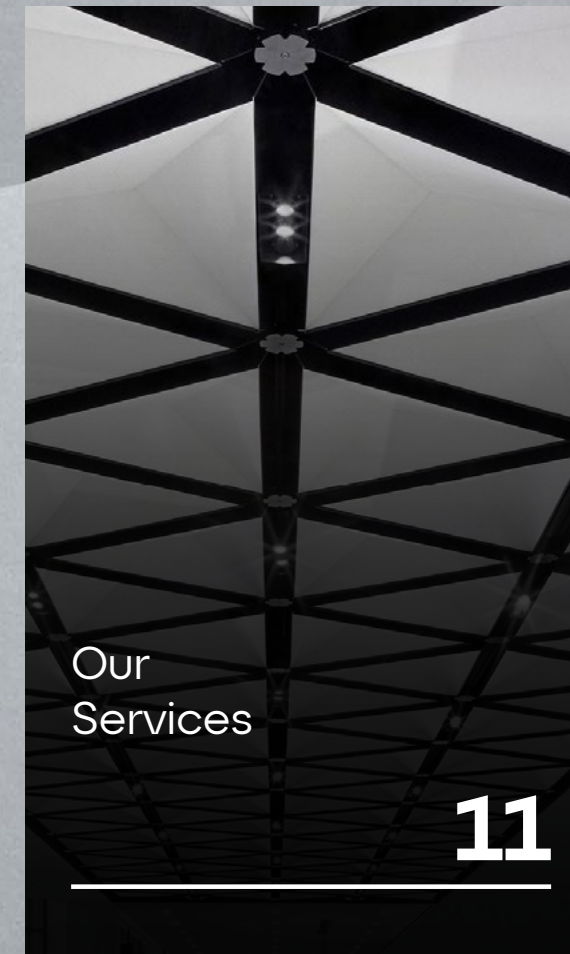
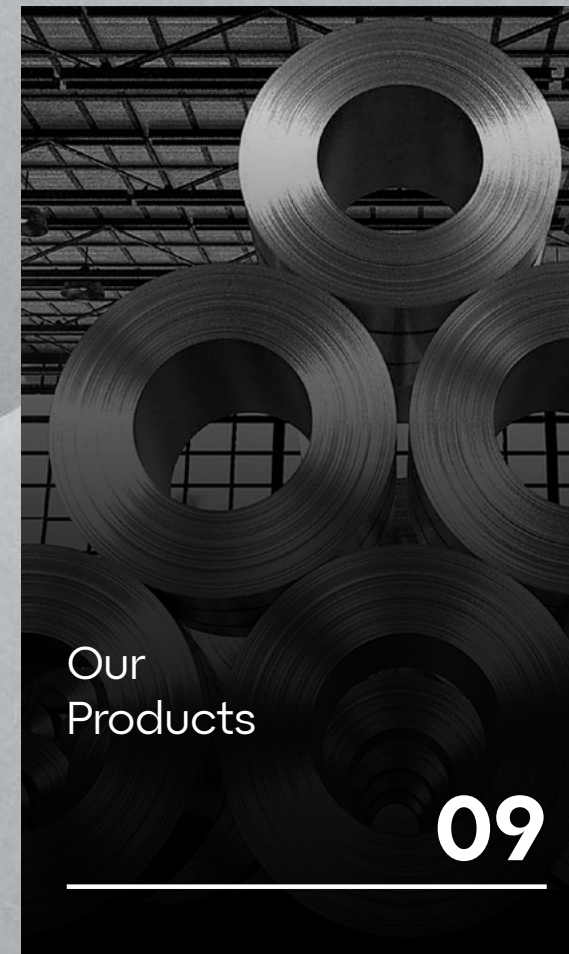
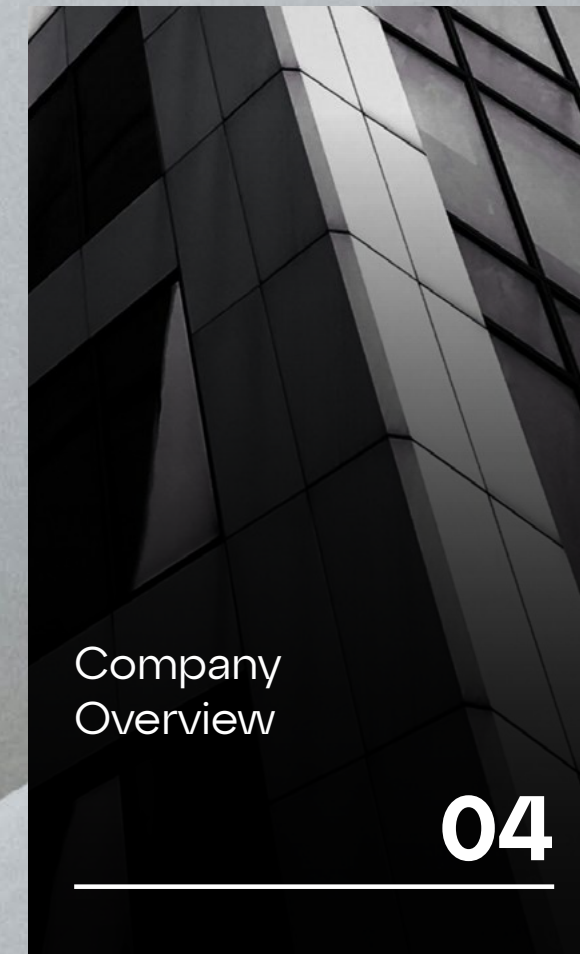
# 2030 Vision

Success stories are always driven by vision, those successful visions that build on strengths, it is **the vision of the Kingdom 2030**, the vision of the present for the future that we want to start working today for tomorrow, we are committed to God and our wise leadership to join hands to complete the construction of our country to be as you envision. We do not accept anything for our homeland other than for it to be strong and prosperous in the forefront of the world, it is not appropriate for the homeland. Together and with you, the Kingdom will be a great country to be proud of, God willing.





# Table of Contents







# Company **Overview**







**“ We have evolved through decades to become one of the best KSA’s leading trading, construction, building, and integrated related solutions companies “**





## We've Proven

From a humble startup in 1986 focused on wholesale building materials trading and retail trade of merchandise, promotional materials, and the activity of selling books, the founder **Dr. Abdulmueeen Al Shawaf** succeeded through an ambitious strategic vision to uplift his business by expanding into all areas of trading and contracting within the Kingdom.

Our story concerns excellence, passion, ambition, efficiency, teamwork, and efficiency. We harness the power of our long experience, stretching back over three decades, to deliver certainty for our clients. Inspiring ourselves from the great booming of the development march conducted by the custodian of two mosques, King Salman bin Abdulaziz and his crown prince Muhammed bin Salman, God saves them towards realizing the **Kingdom 2030 vision**.

**For three brilliant decades**, we have worked to establish deep roots in many diverse sectors in building materials, marketing of heavy equipment machinery, fit-out, furniture, and steel manufacturing, besides financial communications, activities related to art production, digital screens, event management, and other fields.

**We at Al-Shawaf International Company are proud of the successes it has achieved in the various commercial activities that it entered with confidence and competence, which was one of the fruits of the expansion of the scope of the company's work and the spread of its branches in all regions of the Kingdom of Saudi Arabia as well as in the United Arab Emirates, Turkey, and China.**





# Our Strategy

Our strategy is to be the preferred local partner specialist contractor focused on sustainable markets and attractive projects generating sustained value for our partners. Our local businesses will leverage the company's scale and expertise to deliver integrated engineering solutions and optimal operational excellence, aiming to drive market share leadership in our selected segments.







# Execution Pillars

## Balanced Projects

We select sustainable markets (location, sector, and product) to establish base businesses and attractive projects.

## Operational Excellence

We are operational leaders in safe, efficient, on-time, high-quality delivery and relentlessly strive to improve our operational capabilities.

## Engineering Solutions

We offer the best solutions to our customers by providing alternatives, value engineering, and by investing in innovation and cutting-edge technologies.

## Expertise & Efficiency

We develop our people, operational system, and assets and leverage the unique strength of our technical, operational, commercial, and financial resources.







# Our Products

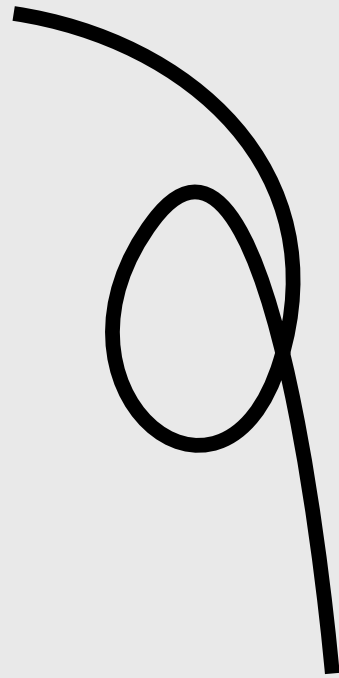






The most important factor that makes Al Shawaf International preferred in textile architecture and membrane shell structures is its Saudi Arabia approach

from  
**Design**



to  
**Implementation.**

It has earned its place among the biggest companies of its industry in Saudi Arabia in terms of project planning, manufacturing, assembly, service and maintenance for Steel structures and PVC, PTFE, HDPE membrane structures and thanks to its rapid, creative and professional teams, its advanced machinery that meets today's needs, and a production capacity of 5000 m<sup>2</sup> for PVC, 7500 m<sup>2</sup> for PTFE and 23,000 m<sup>2</sup> for HDPE.

### **PVC & PTFE TENSILE MEMBRANE STRUCTURES**

Courtyards footfalls, amphitheatres, tensile shades, tensile structures, car park shading, mall shade closures.

### **HDPE SHADES**

Car Park Shading, Swimming pool shades, Walkway shading, Restaurants shading.

### **STEEL STRUCTURES**

Metal works, Hangars, steel structures.

### **TEXTILE MESH FACADE SYSTEMS**

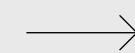
Wide range of material texture, colors and forms, sunshade feature, aesthetic shapes.

### **RETRACTABLE PERGOLA**

Lightweight, durable and folding tensile systems.

**Annual Capacity**

Up to  
**24,000**  
MT/Year







# Our Services







## STEEL STRUCTURE

The production line is able to process both profiles and plates, using CNC machines with a capacity of 2100 T/year. Ensuring the fabrication as per the required specification and Code, offering to QC for inspection both internal and external.

Production Department activities includes:

- Preparing production plan
- Fabrication drawing Study
- BOQ preparation
- Job Order issuance
- Manpower & machine allocation
- Job tickets.

Finishing and Painting are also part of fabrication. The development and production process are optimized by using advanced software. We provide complete traceability and transparency of our products being dispatch by maintaining Packing List & delivery notes.

## PLANNING & MONITORING

The Planning department monitors are controlling and tracking the entire business process starting from PO receiving, job ordering issuance, designing & drafting of product, purchasing of the raw material, Manufacturing & fabrication, galvanizing or painting, packing and delivery.

Planning activities includes the following area, based on annual and quarterly basis:

- Capacity Planning
- Resource Planning
- Procurement Planning
- Inventory

Planning Monitoring activities include

- Budget allocations
- Cost Controls
- Planned verses actual Project Progress

## DESIGN & ENGINEERING

With capabilities ranging from designing, detailed fabrication and erection Al Shawaf International undertakes complete projects and executes them on a zero defect. The Engineering and Designing department comprise of highly experienced designers, who are used specific software facilitating them to design all projects.

Some of the software used in the designing process:

- DLUBAL RFEM
- IXFORTEN4000
- AutoCAD- for 2D Detailing
- Tekla – Detailing Software

Codes & standards used for design and fabrication:

- AISC - American Institute of Steel Construction
- AISI - American Iron and Steel Institute
- AWS - American Welding Society (D1.1)
- ASCE - American Society of Civil Engineers
- UBC- Uniform Building Code
- SBC- Saudi Building Code

## QUALITY & SAFETY

Al Shawaf International intend always to achieve 'Zero defect'. We are going to get certified for Quality Management System ISO 9001: 2008 during 2 months. Quality at Al Shawaf International means delivering only the best products to site in time and high quality.

Safety is a key value to Al Shawaf International work culture. We maintain a spotless safety track record by virtue of our meticulous adherence to the highest safety norms demanded by the industry.





## EQUIPMENTS & FACILITIES

The manufacturing equipment comprise of wide range of steel fabrication machines including for angles, beams using CNC machines with a capacity of 21,00 T/year. The premises of Al Shawaf International includes dedicated fabrication areas equipped with modern machineries including CNC machines, forming machines, rolling machines.

- **Material Movement:**

For In-house Material transportation overhead cranes, forklifts are used.

- **Galvanizing & Surface Treatment:**

All chemical rescaling, sandblasting, painting and galvanizing jobs are outsourced to reliable subcontractors who meet our quality standards.

- **Ware house & Inventory Management:**

Al Shawaf International have separate ware house to maintain minimum stock inventory.

- **Quality Lab:**

All tests are outsourced to reliable third-party laboratories who meet our quality standards.

## WELDING

Our welding process procedures are following the guidelines set by the Structural Welding Code of the American Welding Society and as per the specifications of the American Institute of Steel Construction. The skilled and qualified welders of Steel have certificates and experience in arc welding and MIG welding.

Equipment available for welding are:

- Welding Machines (MIG & ARC)
- Spot Welding Machine

Al Shawaf Structures have variety of machines to facilitate the manufacturing process Lathes, cnc plasma machine, shaper machines, Hack saws, surface grinders, cutting machines, Magnetic drills, mill drills, hand tools, etc.

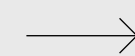
## ERECTION

In addition to the supply of steel building structures, Al Shawaf International offers erection services through its certified manpower. We have undergone intensive training on erecting buildings of varying complexity and for different applications.

Al Shawaf International provides extensive technical advisory services to its clients - from selection of appropriate structures and economic design to adaptation of local building codes. To ensure excellent quality and customer satisfaction.

## FNISHING

Al Shawaf International used sand blast machines and shot blasting machines.







## TENSILE MEMBRANE STRUCTURE

At Al Shawaf International, our main purpose is to build environmentally friendly, long-lasting, and aesthetic membrane structures. In this rapidly emerging sector, we apply state-of-the-art production methods with a creative approach to the production of textile membrane structures.

## PROJECT DESIGN

We strongly believe that the creative dreams of architects, spatial designers, and investors should never be prevented by any means. We are trying to assist our customers in how they can make their wishes come true rather than telling them what not to do. We are trying to provide the most ideal concept solution by collaborating to find the best solution with our customers or with solution partners who wish to have more information.

## PROJECT CONSULTING

Designing 3d model, draft project analysis, detail development, mock up preparing, material selection, technical specifications preparing, process and assembly methodology, creating a budget are our services by our expert team.

## ASSEMBLY

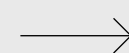
We are carrying out our reinforced concrete anchorage, steel construction, and membrane cover assembly within our company in a controlled manner and by keeping our health and safety inspections at the highest levels. We are providing all kinds of opportunities for our experienced, trained teams and technicians to produce a high-quality field product in compliance with the assembly diagrams provided to them, and by following the construction site rules in suitable processes and with the necessary equipment and tools.

## SERVICE & MAINTENANCE

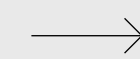
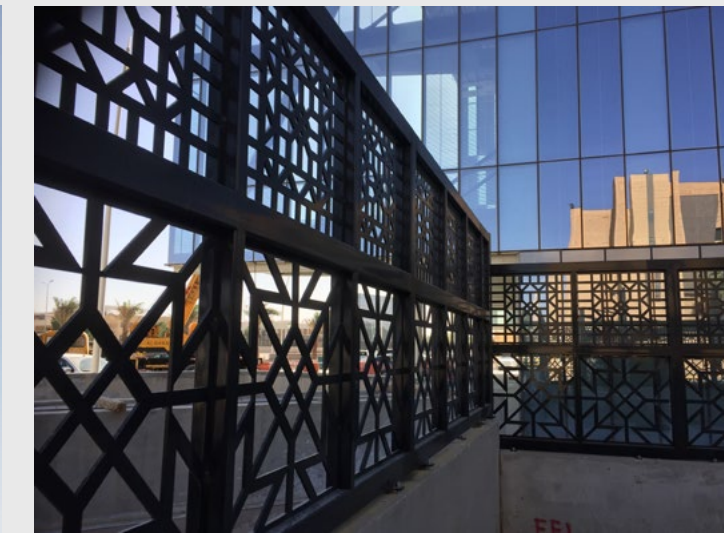
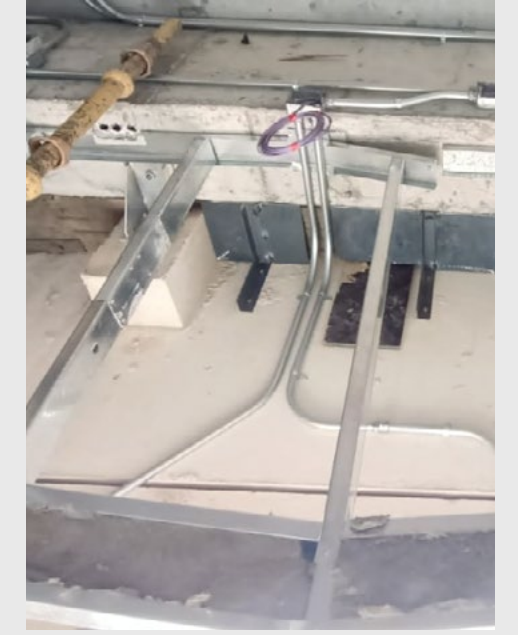
We generally provide a two-year warranty for the manufacturing and assembly errors of steel construction and membrane cover for works manufactured and assembled by us.

## FABRICATION

Our factory located in Riyadh has a textile membrane processing facility area with a 1000m<sup>2</sup> indoor and we are establishing a new a modern factory with total area 8000 m<sup>2</sup> has indoor and outdoor work areas, and provides solution for textile architecture projects in Saudi Arabia. Our new factory has a PVC welding machines, modern High Frequency (HF) machines, Teflon ironing and pressing machines in all sizes and stitching machines for HDPE fabric.











## **PVC MEMBRANE FABRICATION**

Cutting patterns and HF welding by certified machines.



Material Delivery.



Folding, packing and shipment.

## **PTFE PRODUCTION PROCESS**

Cutting patterns and welding by certified machines.



Material Delivery.



Folding, packing and shipment.

## **HDPE PRODUCTION PROCESS**

Cutting Patterns and stitching by UV thread.



Material Delivery.

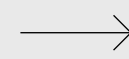
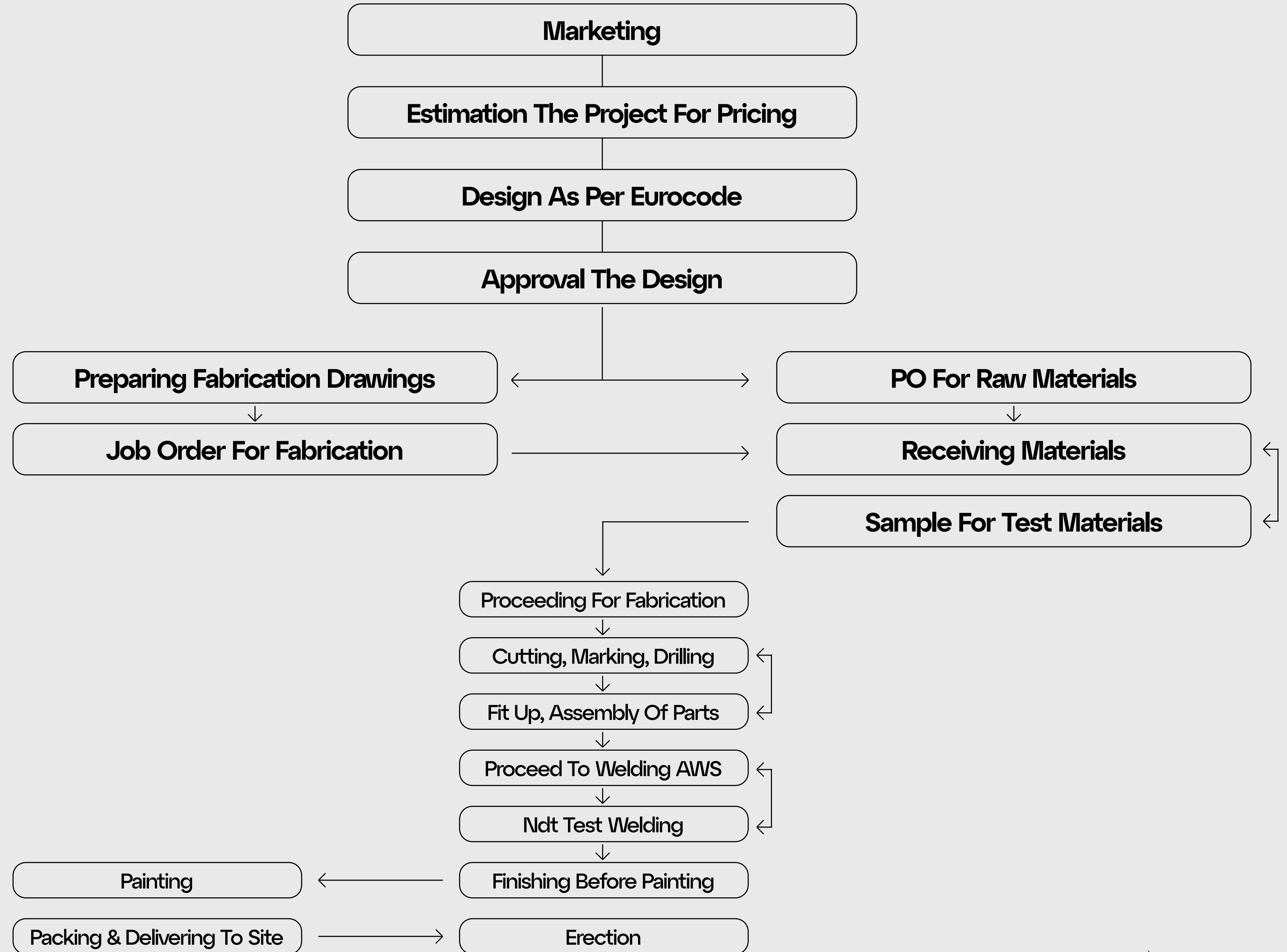


Folding, packing and shipment.





# Operation Process







# Health & **Safety**

Al Shawaf International is committed to continually improving its practices to achieve **“Zero Harm”** performance. We demonstrate this commitment to excellence by operating our facilities in a world-class manner, in order to avoid or mitigate adverse health, safety, and environmental impacts. Al Shawaf International has established measurable performance targets and reports progress on a regular basis. All levels of Al Shawaf International management and its employees ensure that our commitment to health, safety, and the environment is rigorously maintained. The goal of Al Shawaf International’s environment, health, and safety system is to develop, implement, and manage policies and work activities at all our Al Shawaf International facilities.





# Our Team

This innovative partnership spirit takes its strength from being supported by an expert team and high technology also, gathering architectural and engineering disciplines together.

## **Steel & Membrane Manufacturing and erection Departments:**

**1** Structural Engineer

**1** Mechanical Engineer

**1** Industrial Engineer

**6** Administrative Affairs

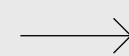
**14** Erection Team

**2** Quality Control Department

**4** Technicians

**27** Manpower

**1** Marketing







# Installation **Method**







- 1.** Rope access workers install the safety lines around the perimeter current of the working area.
- 2.** Lift all material needed for the bay to the rain gutter and secure.
- 3.** Netting team installs the fall protection net.
- 4.** Installation of membrane liner.
- 5.** Lift membrane into the liner and spread with winches.
- 6.** Install pulling plates and attach to the “Arch Crawler”.
- 7.** Place one webbing belt between each arch (wind securing).
- 8.** Pull the membrane over the arch and secure the membrane.
- 9.** Slide in the extrusion and slide in the right amount of screw connectors into the extrusion.
- 10.** Dismantle the membrane liner and pull over the arches from the next bay axis and install.
- 11.** Install the corners and clamp extrusions.
- 12.** Install pulling hooks and span sets, and tension around the perimeter.
- 13.** When the membrane reaches its final tensioning, the screw connectors are locked with a second nut (lock nut).
- 14.** Final check by inspection team, sign off and hand over to project manager.
- 15.** Flap installation and welding.
- 16.** All remaining safety lines are dismantled by rope access workers.
- 17.** Final check by inspection team, sign off and hand over to project manager.
- 18.** After all works on axis are finished, the axis is closed.





# Method Statement

## Explanation

### 1.

**Install the safety Rope access workers lines around the perimeter current of the working area.**

Before any other works start at the site, a qualified rope access team enters the area to mount special 'arch clamps' and attach the safety lines that will be used by all other workers during the installation. It is essential that this person uses appropriate fall arrest equipment. The safety line needs to be installed in a manner that meets the safety standards and maintenance requirements.

### 2.

**Lift all material needed for the bay to the outer rain gutter and secure.**

The pallets are transported to the right crane. Safe transport routes should be agreed with main contractor by the office. Material is lifted by crane to the rain gutter. Pallets should be secured in a manner to avoid the paint job damage and to avoid material falling from the roof. On the roof a receiving person(s) needs to be present to take the transported pallets and secure them in a proper way contractor requirements.





### 3.

#### **Netting team installs the fall protection net.**

The netting team can enter perimeter only after proper safety lines are installed! The netting team spreads the net through the axis length. After spreading the net, the net side line (or attachment points) is connected to the “arch clamp”. On the axis neighboring the already installed membrane, only one net is installed on the side opposite to the membrane. On the other axis of the bay, two nets are installed (on both sides of the axis). Nets and/or membrane should form a V shaped corridor.

### 4.

#### **Installation of membrane liner.**

Membrane liner lifted by a crane (first membrane) or moved from the other bay is spread by a preparation team through the axis length. After spreading it is connected to the “arch clamp”. Please note that due to the total length (and also different length) of the axes, the liner should be composed from sections that can be connected/ disconnected together depending on the needs. Also, the sections sizes should be small/large enough to be easily and safely moved over the arches to the next bay.

### 5.

#### **Lift membrane in to the liner and spread with winches.**

Membrane liner lifted by a crane (first membrane) or moved from the other bay is spread by a preparation team along the axis length. After spreading, it is connected to the “arch clamp”. Please note that due to the total length (and also different lengths) of the axes, the liner should be composed of sections that can be connected/ disconnected depending on the needs. Also, the section sizes should be small or large enough to be easily and safely moved over the arches to the next bay.

### 6.

#### **Install pulling plates and attach to the “Arch Crawler”.**

After the membrane has been spread, the special “Arch Crawler” clamps are mounted to the arches. Pulling plates and pulling ropes are installed on the membrane.





## 7.

### **Place one webbing belt between each arch (wind securing).**

To prevent damage to the membrane during and after installation, webbing belts are positioned between the arches to provide additional wind securing, complementing the protection offered by the ‘Arch Crawler.’”

## 8.

### **Pull the membrane over the arch and secure the membrane.**

The membrane is pulled from the second axis. For this the pulling team uses the rope connected to the membrane pulling plates and “Arch Crawlers”. At least two persons should pull on each arch. For pulling special pulling rolls with one way move only mechanism are used. IM’s coordinate all pulling people that the membrane is spread evenly over the arches and to avoid the situation that the membrane is pulled too much on one arch and thus blocking the pulling of the whole membrane.

## 9.

### **Slide in the extrusion and slide in the right amount of screw connectors into the extrusion.**

After the membrane is spread, the installation team starts to slide in the extrusions over the whole radial length of the membrane (as much as possible). Same time the correct amount of screw connectors is also slid into the extrusions.

## 10.

### **Dismantle the membrane liner and pull over the arches from the next bay axis and install.**

The same time the other installation tasks are performed, the liner is disconnected from the arch clamps, separated to single sections and moved over the arches to the next axis. Then it is assembled and mounted as stated in point 4.





## 11.

**Install the corners and clamp extrusions. After extrusions have been slid in, the corners are installed.**

After the corners are installed, the proper tension is given to the membrane. The corners are then installed to the steel work. After the membrane is tensioned, the special clamp extrusions are cut to size and installed on membrane radial length between the corners and the extrusions.

## 12.

**Install pulling hooks and span sets, and tension around the perimeter.**

To get the membrane to final position, temporary pulling hooks are installed on the extrusion. Then the ratchet belts are installed between the pulling hooks and steel structure and with it the membrane is tensioned to the final position.

## 13.

**When the membrane reaches its final tensioning, the screw connectors are locked with a second nut (lock nut).**

After that the tension of the screw connectors is adjusted in a manner that the extrusion is straight. Then the connectors are locked with a second nut (lock nut) to stay on the final position.

## 14.

**Final check by inspection team, sign off and hand over to project manager.**

After all the previous works are finished and the axis is cleared, the inspection team perform a “final check”. During final check by inspection team check the correctness of installation and the tensioned membrane for any potential damage. If any additional works are required, the inspection team send a team ASAP or note what needs to be done in near future. If everything is correct, the inspection team sign off the completion form and hand it to project manager.





## 15.

### **Flap installation and welding.**

When the axis is finished, the membrane flap is pulled and welded by trained welded team.

## 16.

### **All remaining safety lines are dismantled by rope access workers.**

It is essential that this person uses appropriate fall arrest equipment

## 17.

### **Final check by inspection team, sign off and hand over to project manager**

After the membrane flap is welded, the welding quality is checked by the inspection team. When some corrections are required, the place of it is marked and the welding team has to do it. If everything is correct, the inspection team. sign off the completion form and hand it to project manager.

## 18.

### **After all works on axis are finished, the axis is closed.**

Once welding is completed and signed off, the axis is marked with barricade tape and should not be entered by workers anymore. If everything is correct, the inspection team signs off on the completion form and hands it to the project manager.



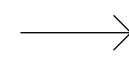




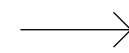
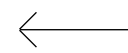


# Project **References**

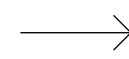
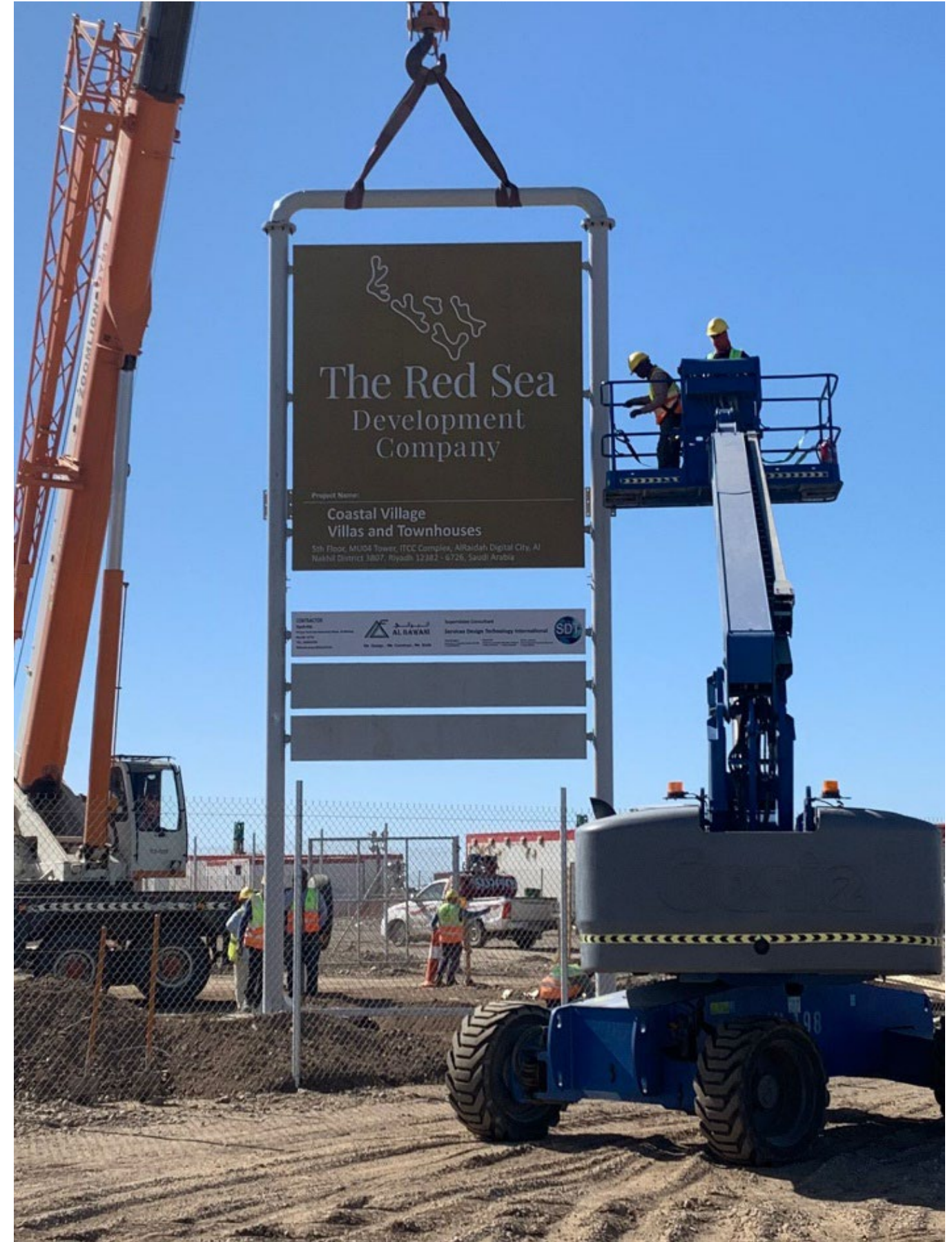
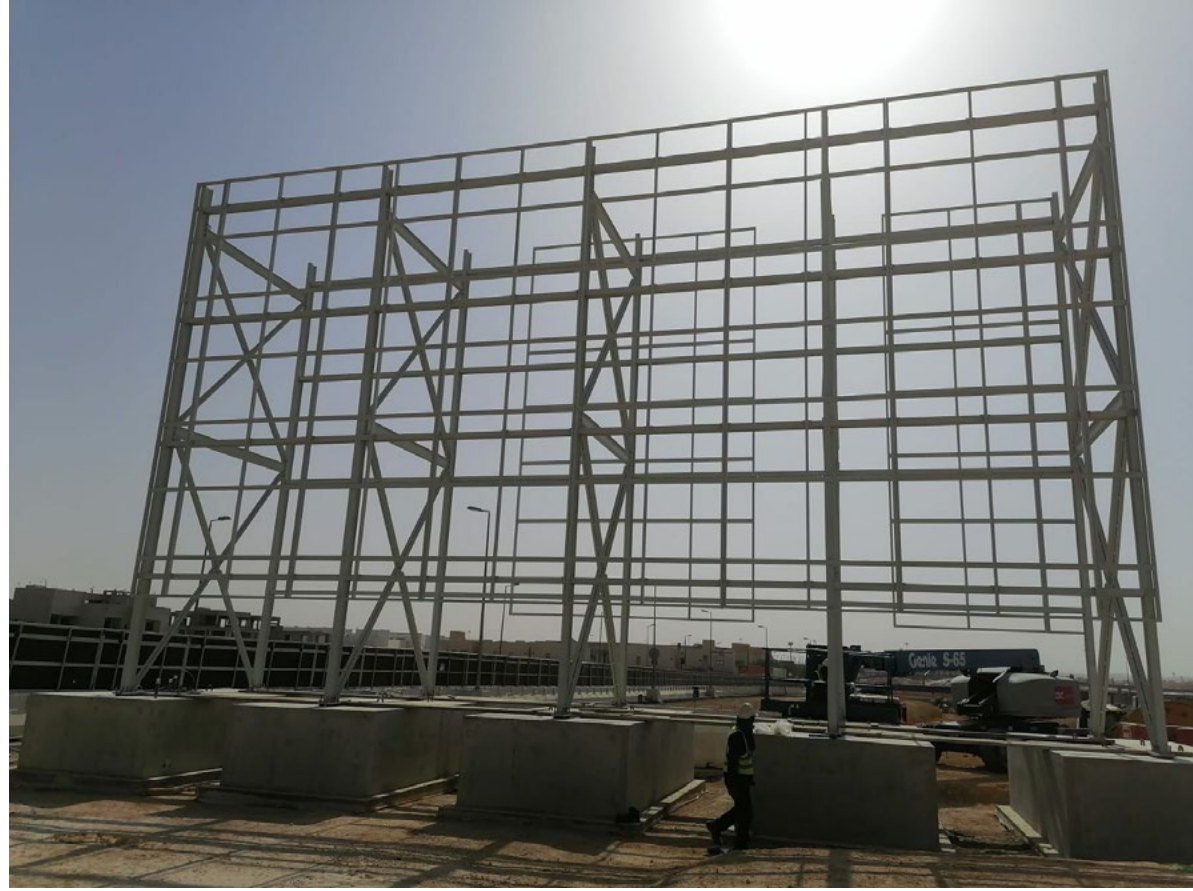




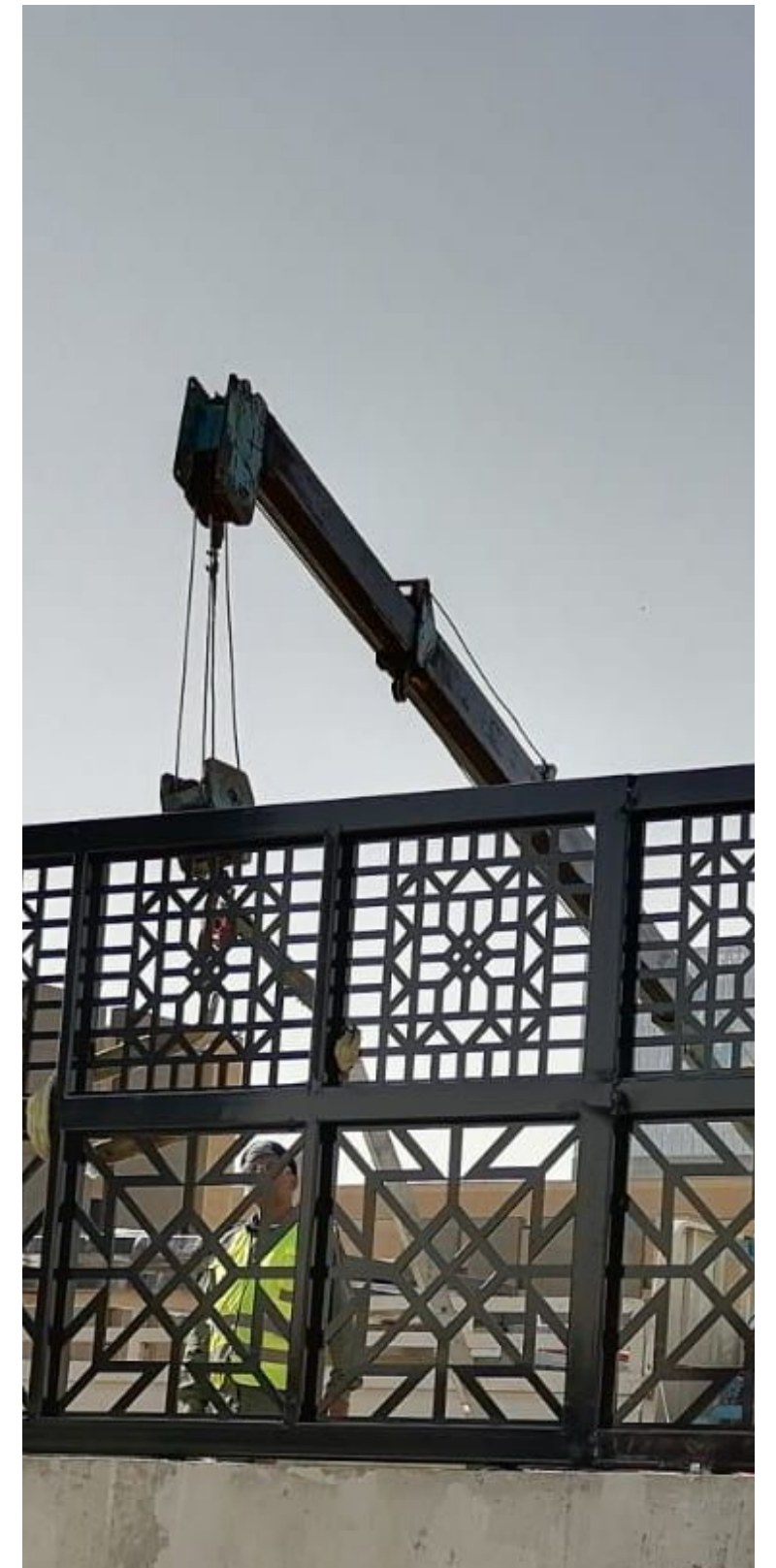




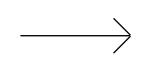
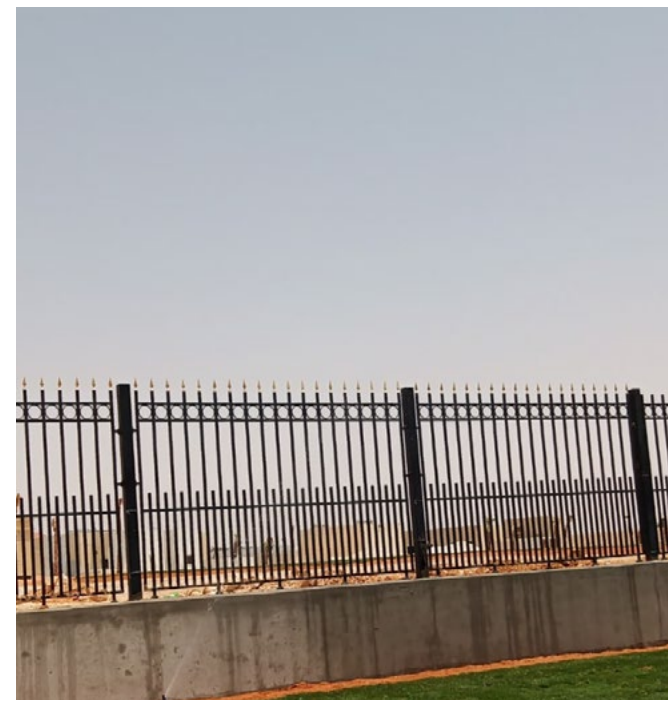
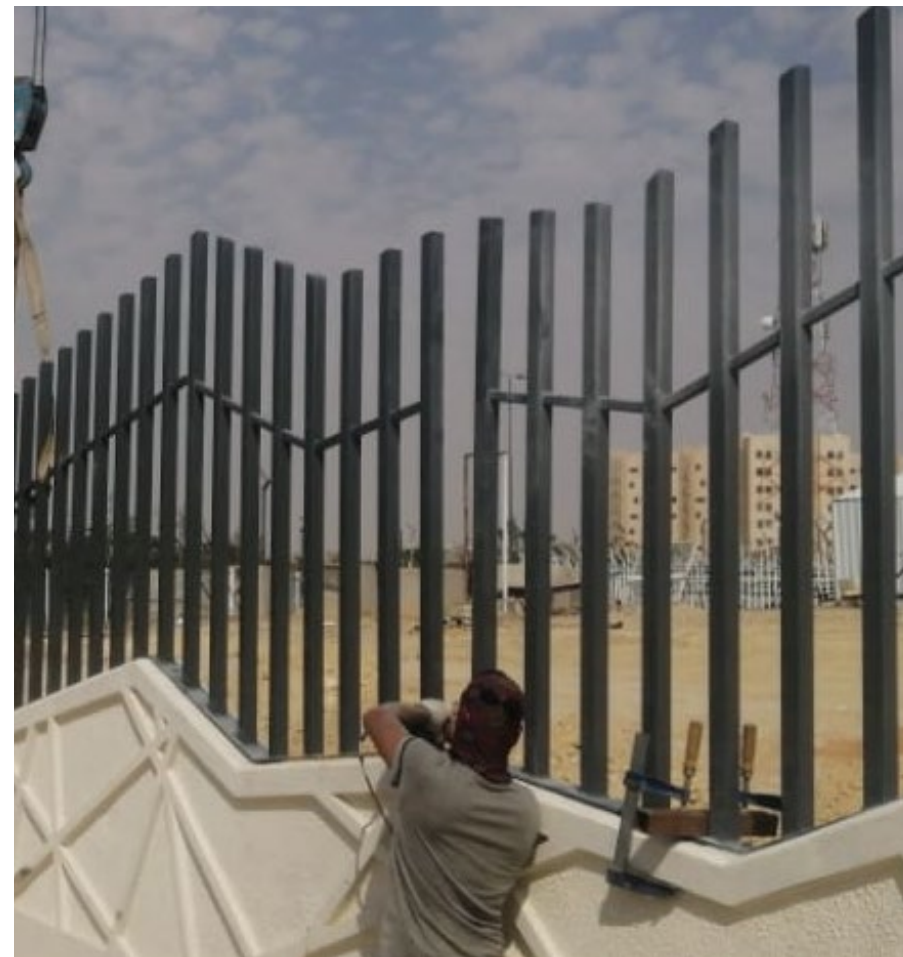




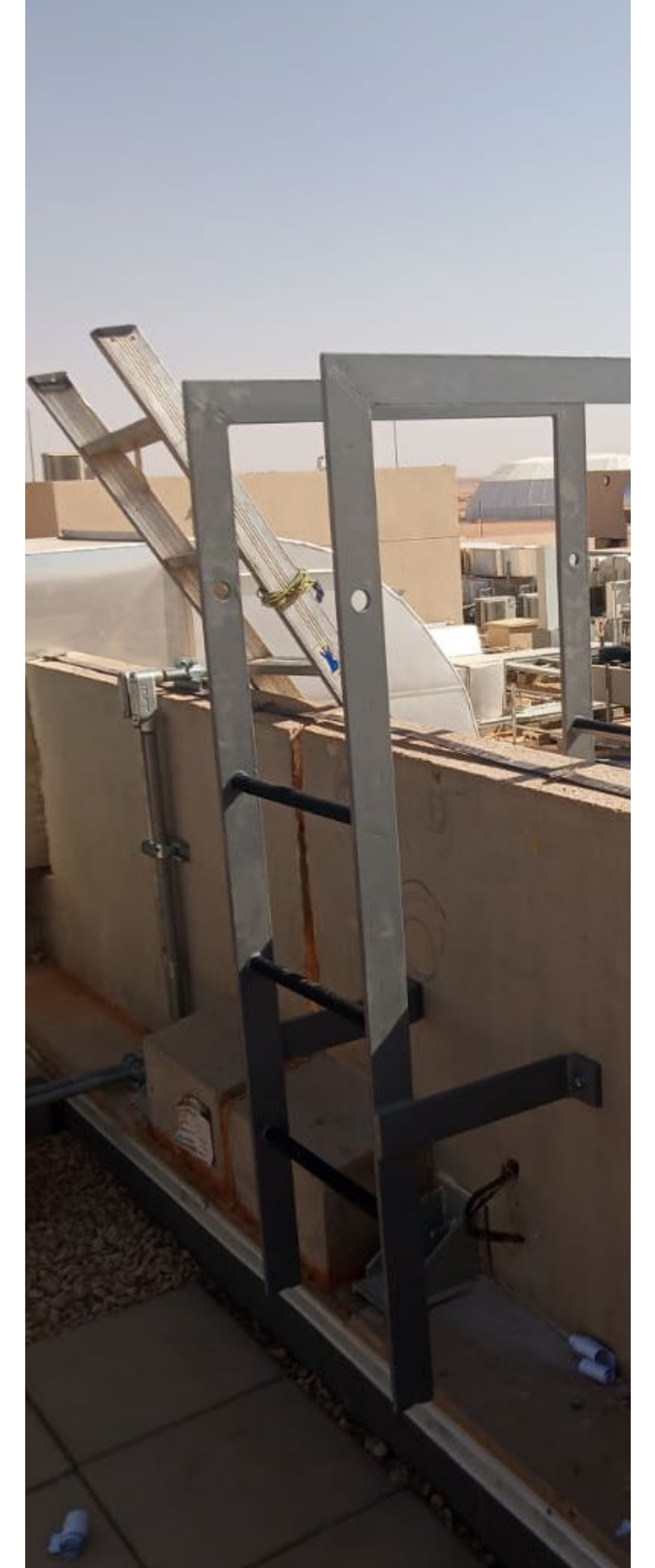




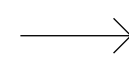




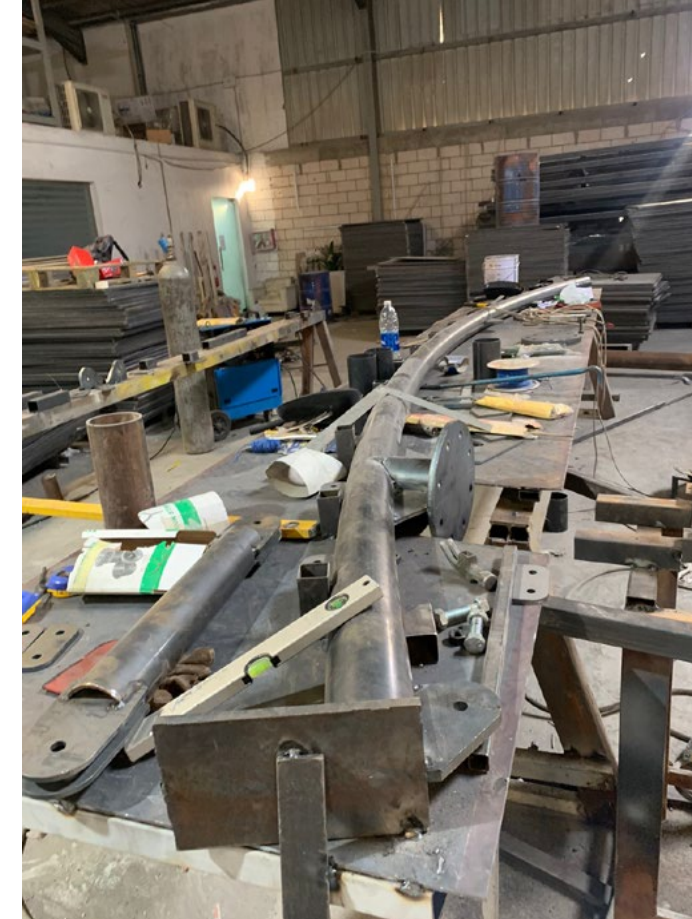




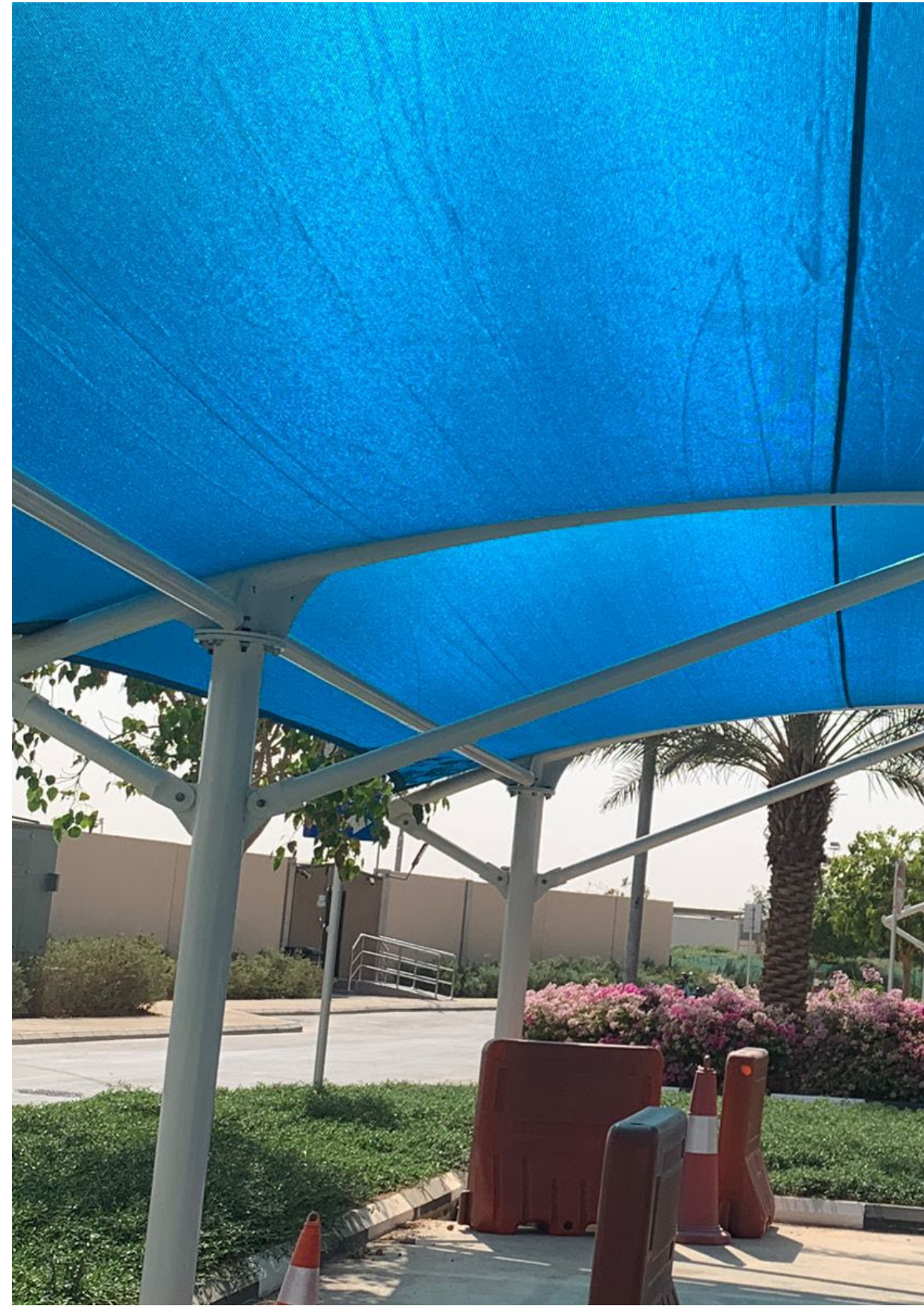




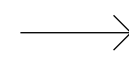




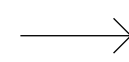




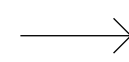












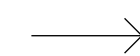








# Our Clients







Tel.:  
+966555934152  
+8618520491114

P.O. Box: 43307 Riyadh, 11561  
Email:  
info@alshawafintl.com

Abi Al Hajjaj Al Mousili, Al Malaz, Riyadh 12627, Saudi Arabia

**[www.shawafintl.com](http://www.shawafintl.com)**

 / Alshawaf